

# HE WHAKAMĀRAMA

## Kei te hiahia mātau i ō whakaaro mō ā mātau kaupapa matua me ngā kaikōkiri mō te whakarerekē.

I ia rā neke atu i te 4.9 miriona ngā tāngata e whakamahi ana i te pūnaha haumarū kai - te hoko kai hei tunu, te kai i ngā toa kai rānei. Me pai aua kai ki te kai, ā, me mōhio ngā tāngata ko ngā mea e kainga ana e rātau ko ngā mea ērā e kīia ana. Neke atu i te 40 miriona ngā tāngata puta noa i te ao kei te kai i ā tātau kai, ā, e tūmanako ana rātau he pai, he tōtika. Ko tā mātau mahi he whakarite kei te eke i te pūnaha haumarū kai o Aotearoa ēnei tūmanako.

Me whai rautaki te Haumarū Kai Aotearoa e noho ai hei manutaki i ngā pūnaha haumarū kai e taea ai te tūtaki ki ngā taumahatanga e tipu ana kei runga i te pūnaha haumarū kai. Mā te titiro whakamua ka tautika te whakarato i ngā otinga i tēnei rā me te whai i ngā whai wāhitanga e puta ai ngā otinga āpōpō.

He pūnaha pakari tonu tā tātau e tiaki ana i ā tātau kaiwhakapeto, e whirinakitia ana e ngā hoa pātui tauhokohoko, me te pouhere i tā tātau ōhanga. Kia mau ai tēnei me mārama te aronga, me whakamārama me aha tātau kia pai te whakatūtaki ki ngā huringa i roto i tō tātau wāhanga, me pēhea, ā, mō āhea whakatika ai i ngā ture, te whakamahi hangarau, me te whakatutuki i ngā hiahia o ngā kaiwhakapeto.

Me mārama ki ngā hiahia, ki ngā pīrangī me ngā tūmanako o ngā kaiwhakapeto, te ahumahi me ngā hoa pātui rāngai.

Me whakawhānui haere e tātau ēnei kōrerorero kia tino mārama ai ki ngā hiahia o ngā tāngata o Aotearoa me ngā pakihī o Aotearoa mā i te pūnaha haumarū kai.

Ko ngā mōhiohio hira i taea i roto i ngā whakawhitiwhiti kōrero ka āwhina i te Haumarū Kai Aotearoa ki te waihanga i tētahi rautaki e tino eke ai ngā hiahia o ngā tāngata o Aotearoa.

### TE PŪNAHA KAI

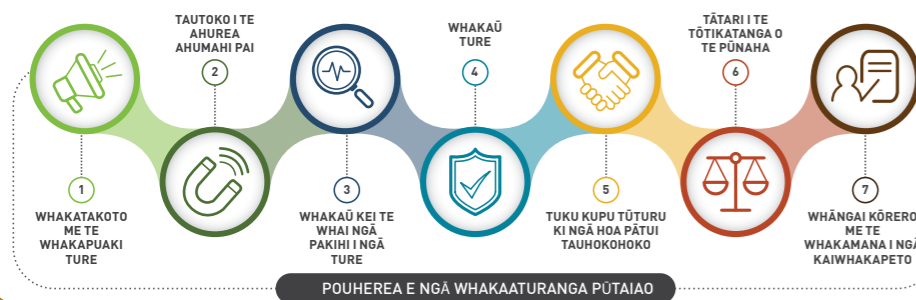


# HE AHA TĀ TĀTAU E WHAKATUTUKI ANA

He wāhanga pakihī a Haumarū Kai Aotearoa nō Te Manatū Ahumahi Matua. He whakarite i te pūnaha Haumarū Kai Aotearoa. I Haumarū Kai Aotearoa kei a mātau te hiahia kia pai te kai hei kai, he pai te āhua hei whakapeto.

He mea taketake te whakaritenga o te pūnaha kai haumarū hei tiaki i te hauora me te oranga o ngā kaiwhakapeto i konei me tāwāhi, me te tiaki i te ingoa pai o ngā kai o Aotearoa. E tiroiro haere tonutia ana e mātau ngā tūponotanga o te pānga mai o ngā mōreatanga ki te kai me te whakararu i ngā kiritaki.

### Ā MĀTAU MAHI PUTA NOA I TE TUKANGA KAI



# NGĀ KAUPAPA MATUA RAUTAKI

Hei whakarite i ngā take e puta ana me te urupare ki ngā whakapātari pūnaha, e whā ngā kaupapa matua e arotahi ai a Haumarū Kai Aotearoa ki te whakatutuki i ngā putanga mō Aotearoa me ngā tāngata o Aotearoa.

## Ka whakarite kia noho pakari te pūnaha kai taumata tiketike ā-ao o Aotearoa hei urupare ki ngā whakapātari ā muri ake

Kei te rerekē haere te āhua o tā tātau whakatipu, whakanao, hoko me te whakapeto i te kai. Ki ō mātau whakaaro he mea hira tētahi pūnaha haumarū kia puta ai te ihu i roto i ēnei huringa.

I roto i ngā tau e rima e heke iho, ka mahi mātau me te ahumahi ki te whakarite i ngā raruraru e pēhi ana i te auahatanga me te kore whakamāmā i te haumarū kai kia noho pakari tonu te haumarū kai, ā, kia taea ai te urupare ki ngā huringa. Ka inea e mātau ā mātau ake mahi, te whakatairanga i ā mātau ake ture haumarū kai pai rawa me ngā pakihī kai me te whakarite ka pai te mahi a te tauria whakaritenga-ngātahi mō te katoa.

## Ka mātua tautoko mātau i ngā kaiwhakapeto kia māia ai ki te tuku kōwhiringa mō te kai

He pai ake te mahi a te pūnaha ina whai mōhiohio ngā kaiwhakapeto ki te tuku i ngā kōwhiringa kai.

I roto i ngā tau e rima e heke nei ka mahi tahi mātau me ngā kaiwhakapeto ki te rapu i ngā ara tika mō te whakaatu mōhiohio mō ngā mea kei roto i ngā kai me te whakarite kei te āhei atu ki ngā mōhiohio pono, tōtika e pai ai ā rātau whakatau. Ka hangaia anō he wāhanga matihiko e rata ai ki te kaiwhakapeto e whai ana i ngā mōhiohio māmā mā ngā kaiwhakapeto.

## Me whai i ngā whakaaroaro hou i roto i ngā wānanga ā-ao kia whānui ake ai tō tātau mana i tāwāhi

Kua rerekē haere te wāhanga tauhokohoko. Kātahi ka tino hira rawa atu tō tātau tūranga mō te ahu haere i tēnei wāhanga.

I roto i ngā tau e rima e heke nei ka whakatairangatia e mātau ō mātau pūkenga pūtaiao, whakaritenga hoki me te whakawhānui i ngā hononga hei tautoko i tō tātau mana i tāwāhi kia whānui atu ai te toro atu o ā tātau kai ki ngā mākete nui ake. Me te aha ka tohua e mātau ngā āhuatanga e whai wāhi atu ai mātau ki ngā hapori kai me te pūtaiao o te ao.

## Ko ngā putanga kei te ngana mātau ki te whakatutuki

- E whirinaki ana, e pono ana te Māori ki te pūnaha haumarū kai i te mea kei te mahi ngātahi mātau.
- E ngākau titikaha ana ngā kaiwhakapeto kei te haumarū me te tōtika ngā kai me te tuku i ngā kōwhiringa i runga i te mōhio.
- E whirinaki ana, e pono ana ngā kāwanatanga o tāwāhi ki tā tātau pūnaha kai.
- E whirinaki ana, e pono ana ngā kaiwhakanao ki te pūnaha haumarū kai, me te tautoko a taua pūnaha i tō rātau tipuranga, auahatanga hoki.

## Mā te punenga tā mātau pakihī e ārahi e tino whakatakatū ai mō te ao anamata

He whai pānga ngā kauneketanga ā-kai me ngā auahatanga ki ngā wāhanga katoa o te mekameka ratonga kai. Ki ō mātau whakaaro me mataara tā tātau pūnaha kai haumarū ki ēnei whanaketanga.

I roto i ngā tau e rima e heke nei ka whakatipuhia, ka whakawhanaketia e mātau tō mātau kaha ā-pūnenga mā te whakapūmau i te kaha me te āheinga ki te tiroiro ki te pae tawhiti. Mā tēnei ka taea e mātau te whakaarotau i ā mātau mahi pae tawhiti e ai ki ngā tirohanga. Ka whakawhanaketia e mātau ngā pūkenga hei torotoro tika tonu me ngā kaiwhakapeto me te waihanga i tō tātau mōhio kia ū ki ngā tikanga Māori ina taute ana me ngā kaiwhakapeto me ngā kaipakihī Māori.

Mā ēnei kaupapa matua me tā mātau mahere mahi ka taea te whakarite kei te noho haumarū me te hauora ngā kaiwhakapeto, kia ū tonu te pono o tō tātau hoa pātui tauhokohoko me te tautoko i ngā kai e hokona ana ki ngā mākete o te ao.

# KŌREROTIA MAI Ō WHAKAARO



I tēnei wā, kei te pēhia ngā pūnaha kai haumarū o te ao. Hei urupare ki tēnei, kua hangaia e Haumarū Kai Aotearoa tētahi rautaki hukihuki e arotahi ana ki te āhua o āna whakatutukitanga ā ngā rā e heke nei. Kei te hiahia mātau i ō whakaaro mō tēnei rautaki me te whakawhanake i ngā pātai hei whakautu māu. He mōhiohio atu anō kei [www.mpi.govt.nz/NZFS-strategy](http://www.mpi.govt.nz/NZFS-strategy).

Kei te pā ngā huringa nui puta noa i te pūnaha kai o te ao, ā, he pānga tō tēnei ki te katoa – mā i te kaiwhakanao ki te kaiwhakapeto.

1. Ka whai pānga ēnei huringa ki te āhua o tā tātau whakanao kai i Aotearoa. Ko ētahi o ngā pānga he pai, ā, ko ētahi kāore e hiahiatia. Me pēhea te mahi tahi a Haumarū Kai Aotearoa me te ahumahi me ētahi atu ki te whakawhānui, whakawhāiti rānei i ēnei pānga?
2. Me kōwhiri he aha ngā kaupapa matua me arotahi atu a Haumarū Kai Aotearoa i roto i ngā tau e 5 e heke nei?
3. He kaupapa matua anō āu me whakaaroaro? He aha ai?
4. Kia whai tonu ai i tētahi pūnaha kai haumarū kai tiketike ā-ao, me hihiri, me pakari. He aha ngā whāruarua me tiroiro e tātau ki te kati?
5. Ki ō mātau whakaaro he pai ake te mahi a te pūnaha ina whai mōhiohio ngā kaiwhakapeto ki te tuku i ngā kōwhiringa kai. Hei kaiwhakapeto, me pēhea tō whiwhi i ngā mōhiohio mō te haumarū kai? He aha ai? He aha ētahi atu mea e kaingakāu ana koe?
6. Kei te nekeneke haere te wāhanga tauhokohoko me tā mātau mahi ki te waihanga i tēnei hei tiaki i te mana o Aotearoa me te tae pai atu o ngā kai o Aotearoa ki ngā mākete o tāwāhi. Ki ōu whakaaro me aha mātau ki te tiaki me te whakapiki i tō tātau mana i tāwāhi?
7. He whai pānga ngā kauneketanga kai me ngā auahatanga/hangarau ki ngā wāhanga katoa o te mekameka ratonga kai. Ki ōu whakaaro he aha ngā mahi hei whakaoti kia tipu ai te auahatanga me te whakarite kei te haumarū me te tōtika te kai?
8. He mea anō kāore i roto i te rautaki me whakauru atu? He aha ai?

Ka taea e koe te tuku whakaaro mā ngā āhuatanga maha, ā, me pēhea mā ngā kōrero kei muri o tēnei tuhinga.

# TE RAUTAKI I RUNGA WHĀRANGI KOTAHI

## TĀ MĀTAU MATAKITENGA

### Ka whakawhirinaki te katoa ki ngā kai o Aotearoa, ahakoa kei hea

## NGĀ PUTANGA E AROTAHITIA ANA E MĀTAU

E whirinaki ana, e pono ana te Māori ki te pūnaha haumaruru kai i te mea kei te mahi ngātahi mātau

Ka ngākau titikaha ngā kaiwhakapeto kei te haumaruru me te tōtika ngā kai me te tuku i ngā kōwhiringa i runga i te mōhio

E whirinaki ana, e pono ana ngā kāwanatanga o tāwahi ki tā tātau pūnaha haumaruru kai.

E whirinaki ana, e pono ana ngā kaiwhakanao ki pūnaha haumaruru kai me te tautoko a te pūnaha i tō rātau tipuranga, auahatanga hoki

Ka tautoko anō mātau ki ngā putanga pāpori me te ōhanga whānui ake me ētahi atu hei whakapai ake i ngā ao o ngā tāngata o Aotearoa.

## Ā MĀTAU MĀTĀPONO ĀRAHI

- 01 Ko ngā kiritaki te mea tuatahi
- 02 Ka whakarongo mātau ka taute
- 03 He tika, he tōkeke matau
- 04 Ko ngā putanga te kaupapa
- 05 Ka tukuna e mātau ngā whakataua e ai ki ngā whakaaturanga
- 06 He ngākau tuwhera tō mātau
- 07 Whakapakaritia e mātau ngā pūmanawa o ā mātau tāngata
- 08 Ka mahi tahi mātau me ētahi atu kia tutuki ai te mahi

## NGĀ MAHI E MAHIA ANA E MĀTAU

E tautoko ana mātau i ngā ahurea ahumahi pai

E whakāu ana mātau i ngā ture

E arotake ana mātau i te tōtikatanga o te pūnaha

### MAI I NGĀ KAIWHAKANAŌ KI NGĀ KAIWHAKAPETO

Ka whakatakotohia, ka whakamāramahia e mātau ngā ture

Ka whakāu mātau kei te whai ngā pakihi i ngā ture

Ka tuku kupu tūturu mātau ki ngā hoa pātui tauhokohoko

Ka whāngai kōrero, ka whakamana hoki i ngā kaiwhakapeto

## Ā MĀTAU KAUPAPA MATUA MŌ NGĀ TAU E RIMA E HEKE NEI

01 Ka whakarite kia noho pakari te pūnaha haumaruru kai taumata tiketike ā-ao o Aotearoa hei urupare ki ngā whakapātari ā muri ake.

02 Ka mātua tautoko mātau i ngā kaiwhakapeto kia māia ai ki te tuku kōwhiringa mō te kai.

03 Me whai i ngā whakaaroaro hou i roto i ngā wānanga ā-ao kia whānui ake ai tō tātau mana.

04 Mā te punenga tā mātau pakihi e ārahi e tino whakatakati ana mō te ao anamata.



# WHAKAPUTAHIA Ō WHAKAARO MŌ TE RAUTAKI HUKIHUKI

Ka āwhina ō whakaaro i a Haumaruru Kai Aotearoa ki te waihanga i tētahi rautaki e taea ai e ia te whakahaere i tētahi pūnaha haumaruru kai e whirinakitia ana e te katoa, i ngā wāhi katoa me te āwhina i a ia kia arotahi ki ngā mea hira rawa.

## Kei te hiahia mātau i ō whakaaro:

Kei te hiahia mātau ki te mōhio he aha ō whakaaro mō ā mātau kaupapa matua e whā me ngā kaikōkiri mō ngā huringa. Kia māmā ai, kua hangaia ngā rauemi hei āwhina i a koe.

He maha ngā āhuatanga e taea e koe te whiwhi mōhio me te tuku i ō whakaaro. Haere ki: [www.mpi.govt.nz/NZFS-strategy](http://www.mpi.govt.nz/NZFS-strategy), kia tiroirohia:

- Te putanga whānui: He rautaki mō te Haumaruru Kai Aotearoa
- Te tuhinga matapakinga
- Whakairoiro mōhiohio mō ngā kaikōkiri mō ngā huringa
- Te whakatipu i te pātui i waenga i te Māori me te Karauna
- Ngā pātai me ngā whakautu
- Īmēra rānei ki [newzealandfoodsafetystrategy@mpi.govt.nz](mailto:newzealandfoodsafetystrategy@mpi.govt.nz) ka whakautu pātai

## Te tuku i tō tāpaetanga

Īmērahia ō whakaaro mō te Rautaki Haumaruru Kai Aotearoa i mua o te 5pm hei te 27 o Mahuru 2019 ki [newzealandfoodsafetystrategy@mpi.govt.nz](mailto:newzealandfoodsafetystrategy@mpi.govt.nz)

Me pēhea tō tuku tāpaetanga:

- Kei reira tētahi tātauira mō tō tāpaetanga
- Ka taea e koe tētahi rangahau tuihono te whakaoti ka waiho i ō whakaaro
- Ahakoa he pai ake ki a mātau te Īmēra, ka taea e koe te tuku tāpaetanga tuhi ki:

He rautaki mō Haumaruru Kai Aotearoa  
New Zealand Food Safety  
PO Box 2526  
Wellington 6140  
New Zealand.

## Ngā mea hei whakauru

- He rautaki mō te Haumaruru Kai Aotearoa
- tō ingoa me te taitara
- te ingoa o tō whakahaere (mēnā kei te tukuna e koe mō tētahi whakahaere, ā, mēnā e whakaata ana tō tāpaetanga i te katoa o te whakahaere, he wāhanga ranei)
- ō taipitopito whakapā (pērā i tētahi tau wāhitau, wāhitau, Īmēra hoki).

## He mōhiohio tūmatanui ngā tāpaetanga

Kia mōhio mai, ko ngā tāpaetanga ka tukuna e koe ka noho hei mōhiohio tūmatanui. Ka taea e ngā tāngata te tuku tārua o ngā tāpaetanga i raro i te Official Information Act 1982 (OIA). E kī ana te OIA me noho wātea mai ngā tāpaetanga engari ia mēnā he pūtake pai mō te kaiponu. E whakamāramahia ana tērā i roto i ngā wāhanga 6 me te 9 o te OIA.

Me kōrero mai mēnā he whai kaupapa anō ki te kaiponu i ētahi mōhiohio i roto i tō tāpaetanga. Ko ngā pūtake pea he mōhiohio arumoni tapu, he mōhiohio whaiaro rānei. Engari, ko ngā whakataua ka tukuna e MPI hei kaiponu i ngā mōhiohio ka taea te arotake e te Kaitiaki Mana Tangata, ka whakahau pea i a mātau kia tukuna.

Ka pōhitia pea e MPI te katoa, he wāhanga rānei o tētahi tāpaetanga ā-tuhi ki tana paetukutuku. Ko te whakarite i whakaae koe ki te whakaputanga, engari ia mēnā he kōrero kē kei tō tāpaetanga.

# New Zealand Food Safety

Haumaruru Kai Aotearoa



## He rautaki mō Haumaruru Kai Aotearoa He whakarāpopototanga

Mahuru 2019

